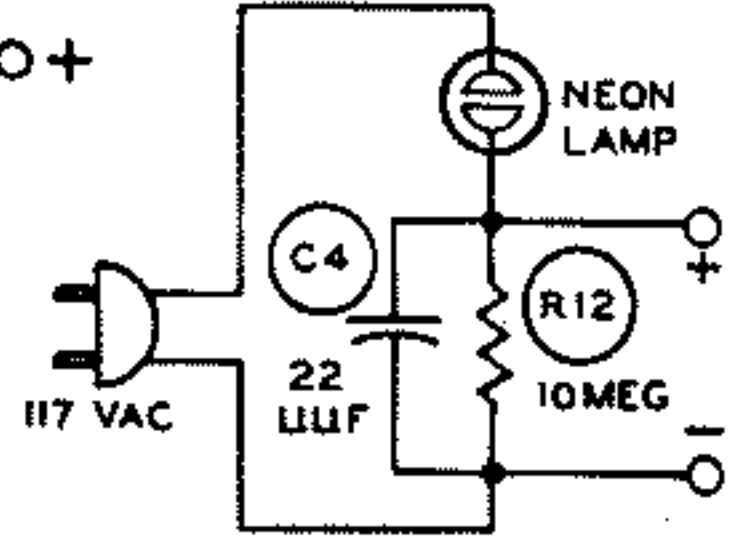


NOTES:  
 \*\*DEPENDS UPON INPUT VOLTAGE - 47 Ω - 6 VOLTS,  
 150 Ω - 12 VOLTS.  
 ○ ALL VOLTAGES MEASURED FROM - LINE WITH  
 CALIBRATION OFF.  
 VOLTAGES MEASURED WITH TACHOMETER  
 CONNECTED TO 12 VOLT BATTERY.  
 ALL CAPACITOR VALUES IN μfd.  
 ALL RESISTOR VALUES IN OHMS, K = 1,000.  
 ALL RESISTORS 1/2 WATT UNLESS OTHERWISE SHOWN.  
 \*DEPENDS UPON CALIBRATION POINT.

**SCHEMATIC OF THE  
 HEATHKIT®  
 ELECTRONIC TACHOMETER  
 MODEL MI-31A**



**CALIBRATION  
 CIRCUIT**