

**NOTES**

ALL RESISTORS ARE 1/2 WATT UNLESS MARKED OTHERWISE  
 ALL RESISTOR VALUES ARE IN OHMS 1K=1000, MEG=1,000,000  
 ALL CAPACITOR VALUES ARE IN U $\mu$ M UNLESS MARKED OTHERWISE

○ INDICATES VOLTAGE READING

ALL VOLTAGES ARE DC POSITIVE UNLESS MARKED OTHERWISE  
 ALL VOLTAGES ARE MEASURED FROM POINT INDICATED TO CHASSIS GROUND, EXCEPT AC VOLTAGES ON POWER TRANSFORMER WINDINGS.

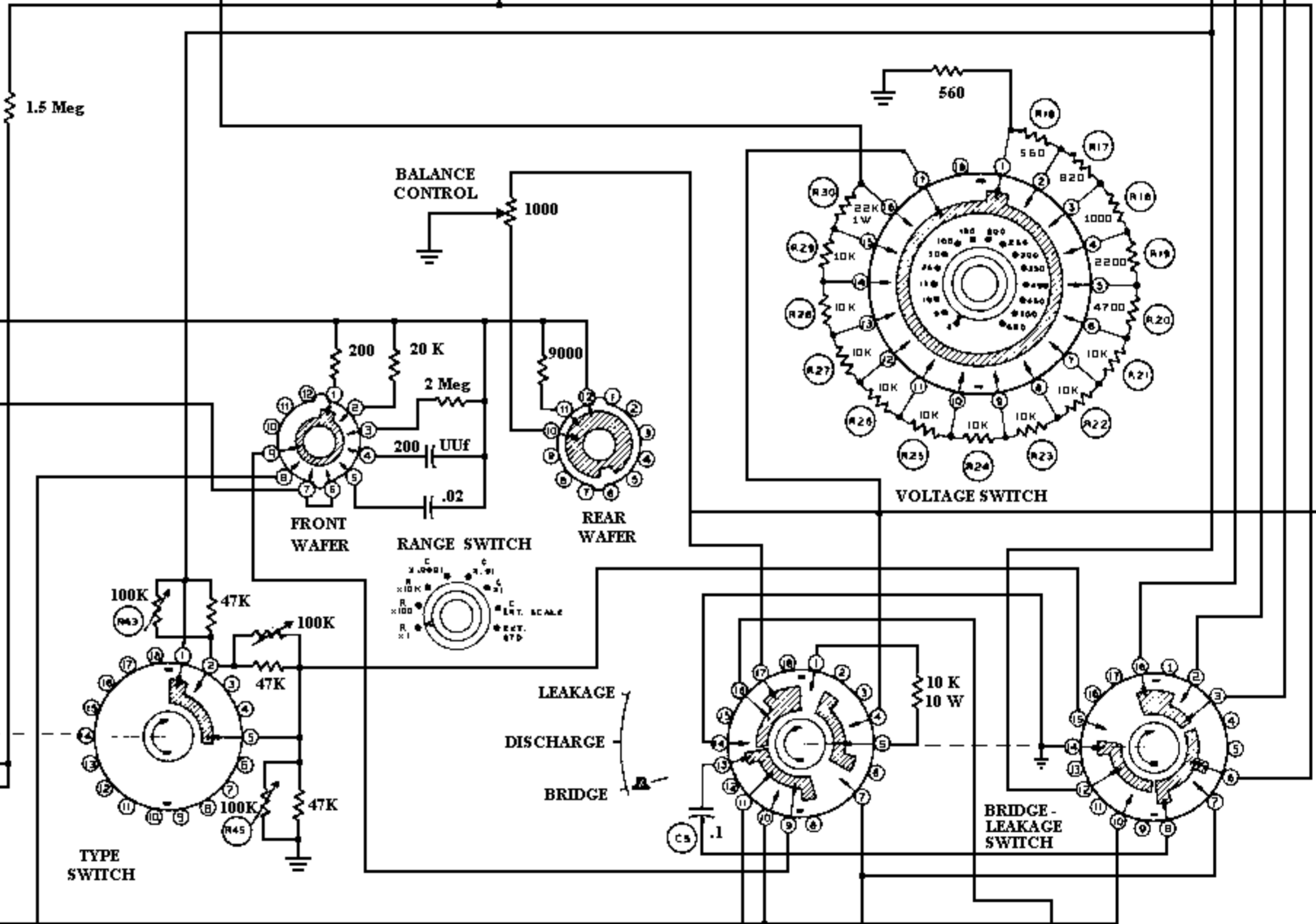
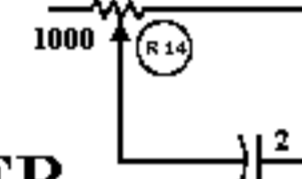
VOLTAGE READINGS TAKEN WITH AN 11 MEG-OHM INPUT VTVM  
 VOLTAGES MAY VARY  $\pm 10\%$

SWITCHES ARE IN THE POSITIONS SHOWN BY THE FRONT PANEL MARKINGS

RANGE AND VOLTAGE SWITCHES VIEWED FROM THE FRONT

# SCHEMATIC OF THE HEATHKIT CAPACITOR CHECKER MODEL IT - 28

POWER FACTOR



PAPER, MICA, ETC  
 MINLYTIC  
 ELECTROLYTIC

