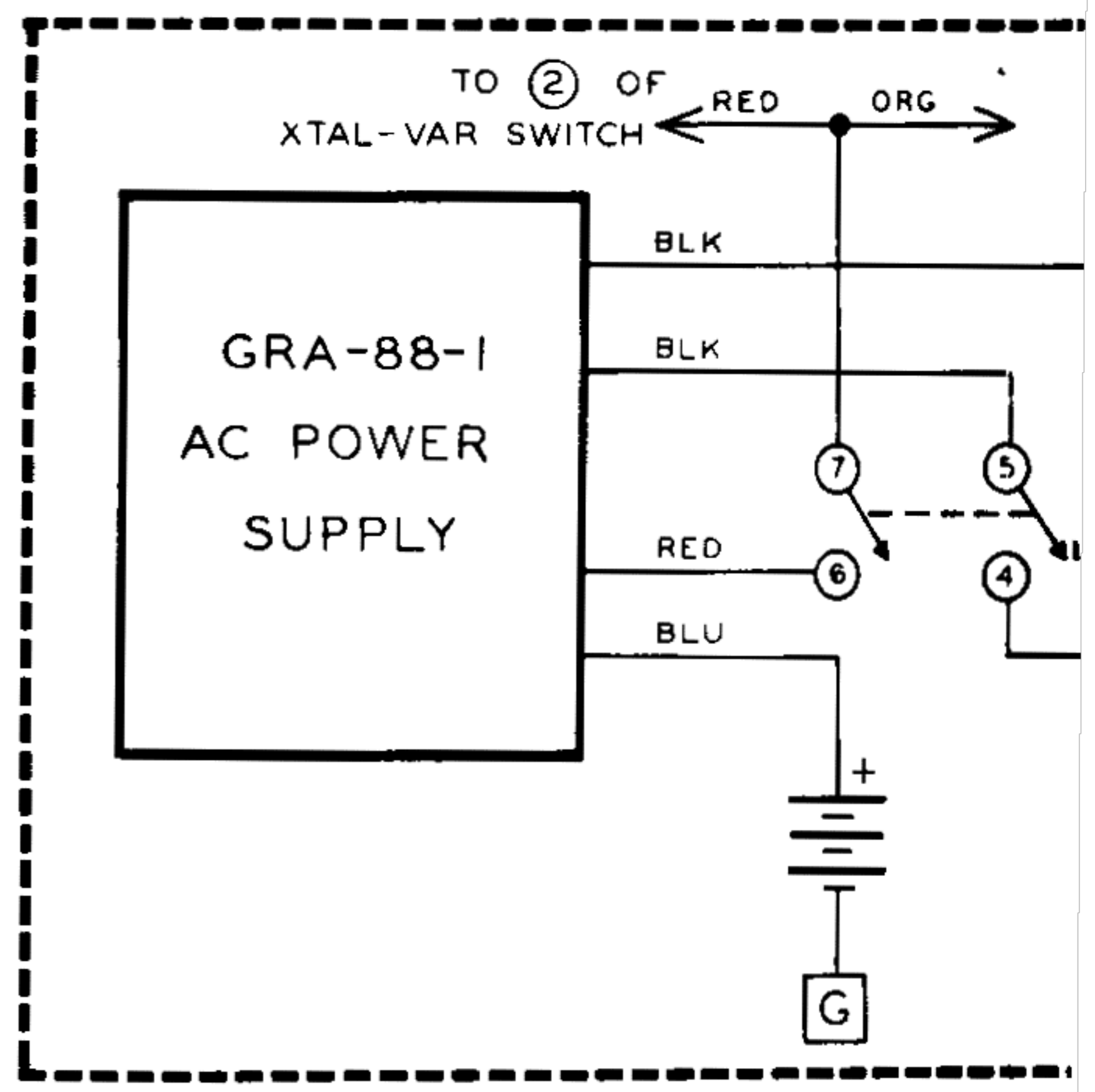
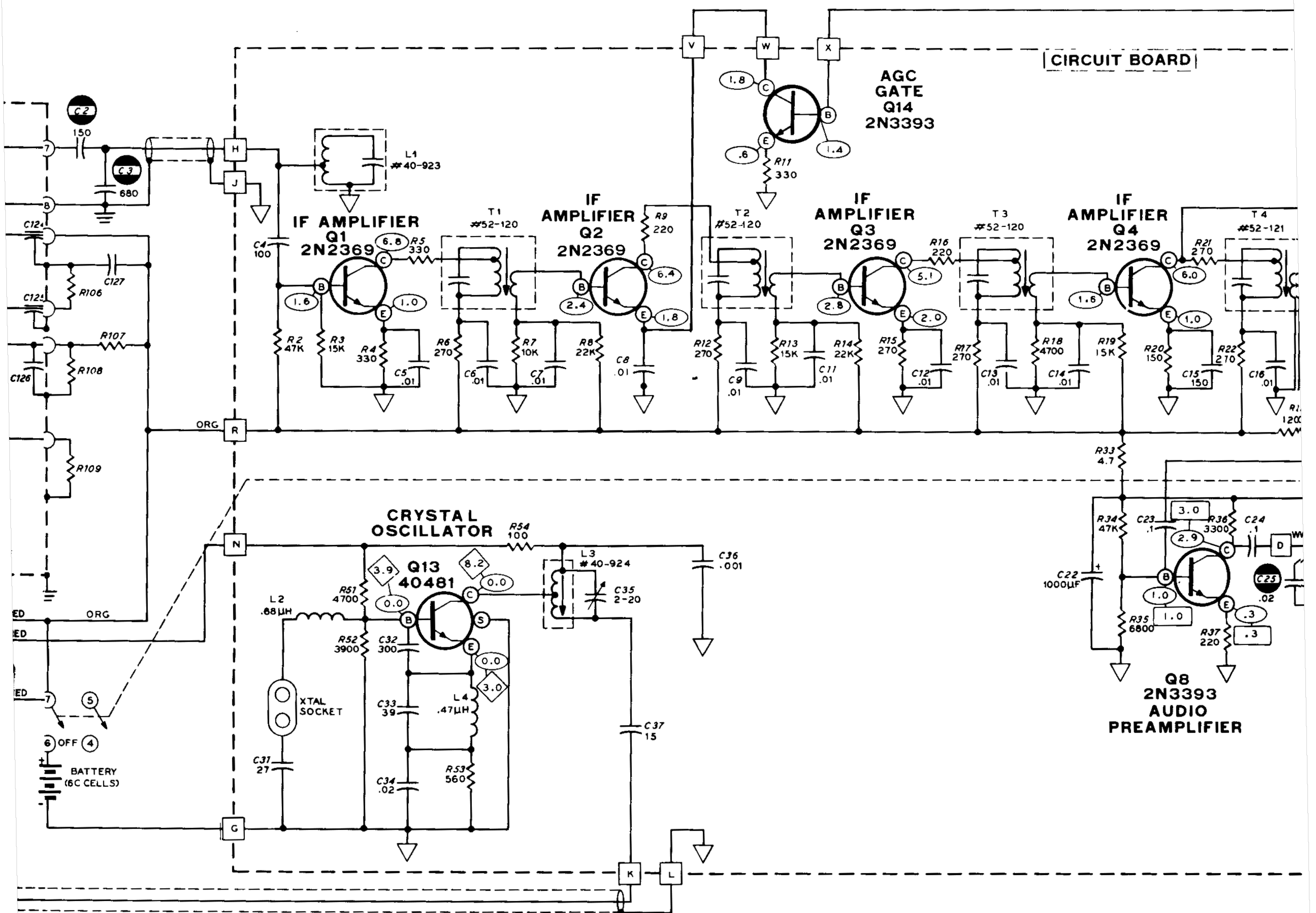


| HEATH PART NO. | MANUFACTURER AND TYPE NO. | BASING |
|----------------|---------------------------|--------|
| 417-118 | G E 2N3393 | |
| 417-121 | AMPEREX 2N2430 | |
| 417-122 | AMPEREX 2N2431 | |
| 417-154 | G E 2N2369 | |
| 417-190 | R C A 40481 | |
| 417-201 | G E X29A829 | |
| 417-169 | MOTOROLA MPF 105 | |





NOTES:

- 1 ALL RESISTOR VALUES ARE IN OHMS: K=1000.
- 2 ALL RESISTORS ARE 1/2 WATT.
- 3 ALL CAPACITOR VALUES LESS THAN 1 ARE IN μ F. VALUES OF 1 AND ABOVE ARE IN pF UNLESS MARKED OTHERWISE.
- 4 DC VOLTAGE MEASUREMENTS ARE TAKEN WITH A HIGH IMPEDANCE VOLTMETER FROM THE POINT INDICATED TO CHASSIS GROUND.

○ THIS SYMBOL INDICATES A MEASUREMENT TAKEN WITH THE SQUELCH CONTROL FULLY COUNTERCLOCKWISE.

□ THIS SYMBOL INDICATES A MEASUREMENT TAKEN WITH SQUELCH CONTROL AT THE THRESHOLD (SEE SQUELCH IN FIG. 1).

◇ THIS SYMBOL INDICATES A MEASUREMENT TAKEN UNDER THE FOLLOWING CONDITIONS:
 WITH OSC SWITCH IN THE XTAL POSITION
 A CRYSTAL IN THE CRYSTAL SOCKET,
 AND NO SIGNAL INPUT.

5 SELECTOR SWITCH IS SHOWN IN V POSITION

6 ▽ INDICATES CIRCUIT BOARD GROUND

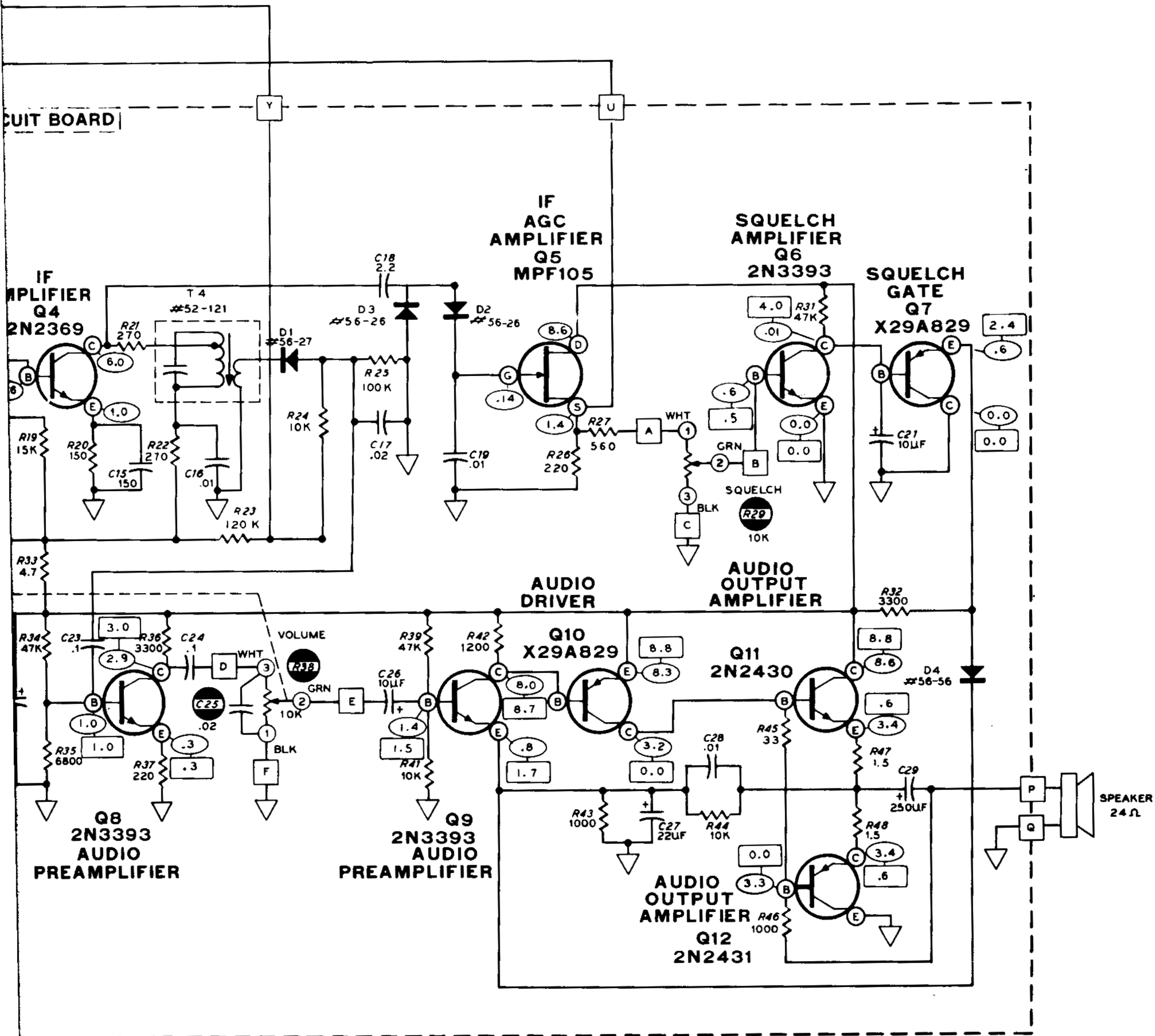
7 ≡ INDICATES CHASSIS GROUND.

8 ○ INDICATES TUNER CONNECTION.

9 □ INDICATES CIRCUIT BOARD COMMON

10 ● INDICATES PARTS MOUNTED ON CHASSIS

11 RESISTORS AND CAPACITORS ARE IDENTIFIED BY PART NUMBER
 1-99 CHASSIS AND
 100-199 AM TUNER PARTS



SWITCH IS SHOWN IN VARIABLE POSITION.

ATES CIRCUIT BOARD GROUND.

ATES CHASSIS GROUND.

ATES TUNER CONNECTION.

ATES CIRCUIT BOARD CONNECTION.

ATES PARTS MOUNTED ON THE CHASSIS.

AND CAPACITORS ARE IN THE FOLLOWING GROUPS:

99 CHASSIS AND CIRCUIT BOARD PARTS.

99 AM TUNER PARTS

SCHEMATIC OF THE HEATHKIT®

AIRCRAFT VHF MONITOR RECEIVER MODEL GR-98